

F BLOCK T3 | EVENTS SPACE

F BLOCK T3

THE
TRUMAN
BREWERY

F BLOCK T3 | EVENTS SPACE



EVENTS



FASHION
SHOWS



CONFERENCES



EXHIBITIONS



TRADE
SHOWS



LICENSED

ABOUT

T3 is a long and rectangular space that features in the collection of rooms located on the first floor of Truman Brewery's Events Building - F Block. This 10,000sqft space benefits from great natural light, white walls, and concrete flooring. T3 is split by an arched wall towards one end, creating a more intimate secondary space. T3 would need to be hired in conjunction with interconnecting spaces T2 or T4.

LOCATION

Located on the First Floor of F Block building. F Block is situated in one of London's most vibrant and energetic areas known throughout London. The iconic Truman chimney and ever-active Estate is frequented by media, creative, fashion and tech industry denizens. The area attracts many thousands of visitors to the bustling work spaces, themed events, weekend markets, eye-popping street art, boutiques, cafes and rich diversity of restaurants.

ADDRESS

Brick Lane, London, E1 6QL

CAPACITY

Event specific

SIZE

9,275 sqft

LEVEL

First floor

CEILING HEIGHT

2.7m

F BLOCK T3 | EVENTS SPACE



ACCESS

There is direct lift access into the venue from Ely's Yard Car park. Additional access is possible via adjoining spaces (subject to availability).

SERVICES

4 x male toilets with urinals and 6 x female toilets are accessible from this space.

COMMS

The Truman Brewery's dedicated on-site service provider, TruTec Services, can easily provide support, networking, telephony and internet connectivity to this location.

POWER

1 x 125A 3 Phase C Form Socket.
Twin 13A Sockets throughout.

LIGHTING

Strip Lights.

SUPPLIERS

We recommend the use of the following teams:

EVENT PRODUCTION:

E1 PRODUCTIONS

INTERNET CONNECTIVITY:

TRUTEC SERVICES

SECURITY:

Trusec Security Ltd.
Event Security Services

EVENT CLEANING SERVICES:

The Truman Brewery
Event Cleaning Services





HUF

The Hundreds

The Hundreds

The Hundreds
EST. 1993
LOS ANGELES, CA

THE TRUMAN BREWERY

A: 91 Brick Lane, London E1 6QL
T: 0207 770 6011
E: monika@trumanbrewery.com

DRAWING NAME

F.01.T3

SPACE DETAILS

F BLOCK
1ST FLOOR - T3
BASIC PLAN

VENUE LOCATION

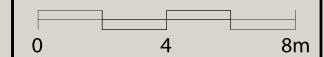
F Block
15 Hanbury Street
London E1

LEASE AREA (WITHIN RED BOUNDARY)

8322 sqft

SCALE

1:240 @ A4



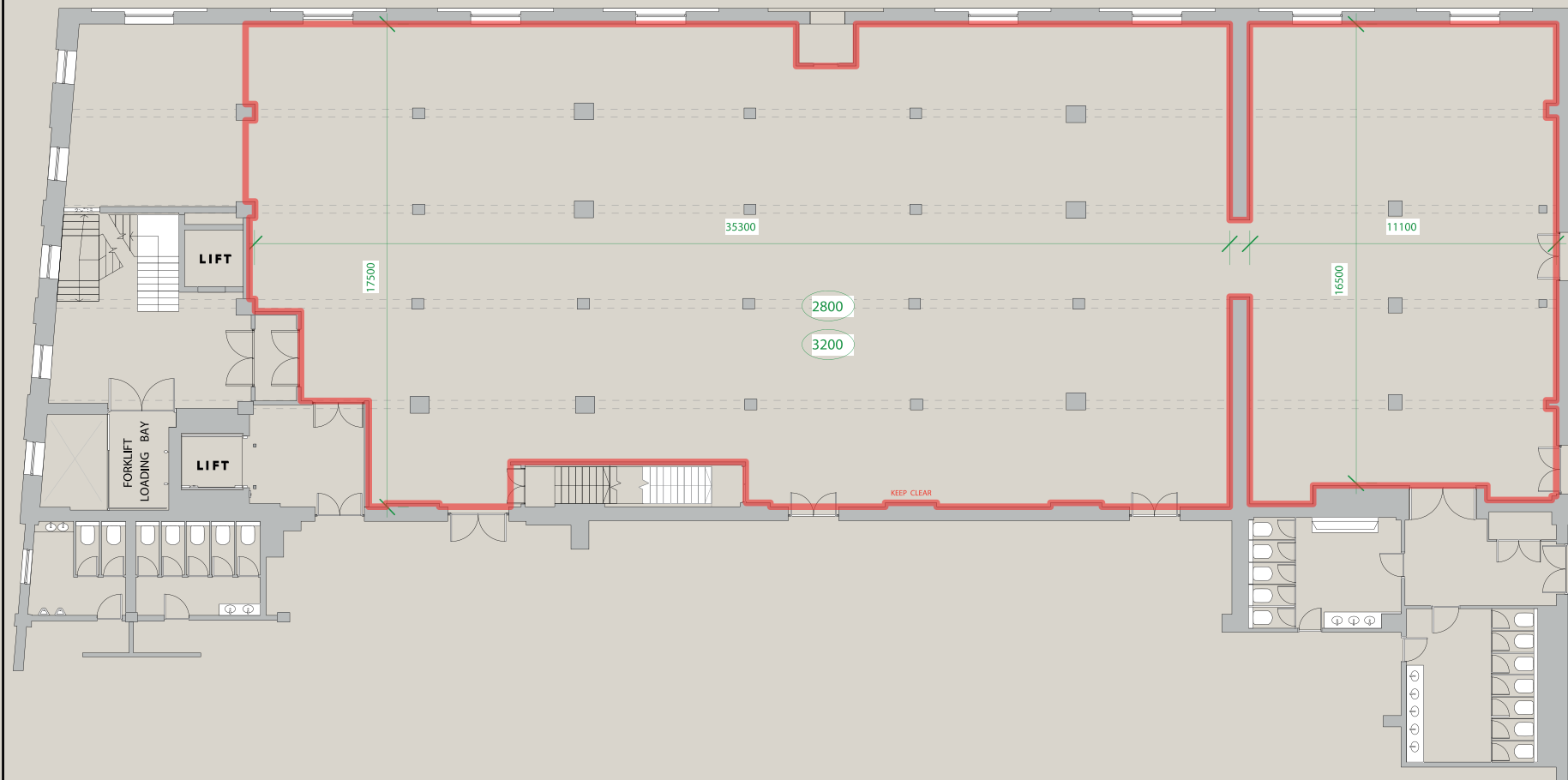
NOTES

--- SIGNIFIES CEILING STRUCTURES , MOSTLY BEAMS

1234 CEILING HEIGHTS GIVEN IN MILLIMETRES ROUNDED DOWN

All measurements are approximate .
Measurements in millimetres .

DO NOT SCALE .
IF IN DOUBT ASK .





**BE
HEARD**
#DandAD15

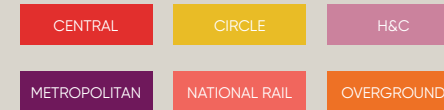


TRANSPORT

F Block and The Truman Brewery have probably the most central Shoreditch location, and are easily reached by bus, rail, tube or on foot.

The venue benefits from close access to all forms of public transport. Liverpool Street and Shoreditch High Street stations are a short distance away, with Aldgate East within easy reach, offering fast connections across London and beyond.

Liverpool Street Station
Walking distance: 10 min



Shoreditch High Street Station
Walking distance: 5 min



Aldgate East Station
Walking distance: 10 min



Whitechapel Station
Walking distance: 15 min



Contact us to arrange a viewing:

Phone

+44(0)20 7770 6001

Email

events@trumanbrewery.com

Drop in

The Truman Brewery Events Department,
E y's Yard,
15 Hanbury Street,
London E1 6QR